



VILLAGE ESTATES

• EST.1993 •



93 Main Road, Sidcup, Kent DA14 6ND

Tel: 0208 302 1002

www.village-estates.com

Email: sidcup@village-estates.com



LONG LEASE AND NO MONTHLY CHARGES

CENTRAL SIDCUP LOCATION

GARAGE EN BLOC

PRIVATE REAR GARDEN

CLOSE TO HIGH STREET

OFFERED WITH NO CHAIN



3 Granville Road
Sidcup, DA14 4BW

£290,000

First floor maisonette with a private GARDEN and GARAGE. Offered with no forward chain and situated equal distance between Sidcup mainline station and high street. We feel this would be an excellent FIRST TIME PURCHASE or buy to let investment.

EPC RATING: C

TENURE: Leasehold

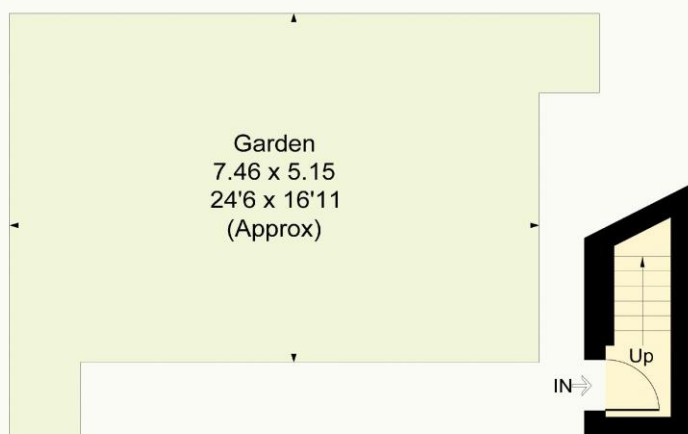
COUNCIL TAX BAND: C

LEASE TERM: 133 years remaining

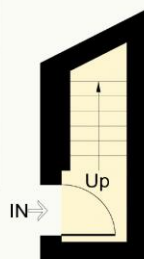


Granville Road, DA14

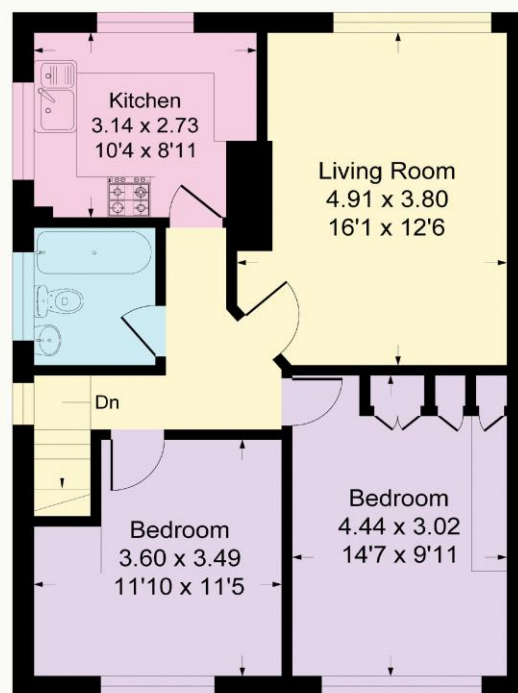
Approximate Gross Internal Area = 63.2 sq m / 681 sq ft



Garden



Ground Floor



First Floor

CONSUMER PROTECTION FROM UNFAIR TRADING REGULATIONS 2008

Please note that any services, heating system or appliances have not been tested, and no warranty can be given or implied as to their working order. You are advised to obtain verification from your solicitor or surveyor. References to the tenure of a property are based on information supplied by the seller. We have not had sight of the title documents and a buyer is advised to obtain verification from their solicitor. Items shown in photographs are not included unless specifically mentioned within the sales particulars, but may be available by separate negotiation. Whilst every attempt has been made to ensure the accuracy of the floor plan contained here, measurements of doors, windows, rooms and any other items are approximate and no responsibility is taken for any error, omission, or mis-statement. We advise you to book an appointment to view before embarking on any journey to see a property, and check its availability. The accuracy of these details are not guaranteed and they do not form part of the contract.